

GRIP PRODUCTS

GRIP-GF

Fireproof Coupling

The Grip-GF combines with functional design with the latest technologies.

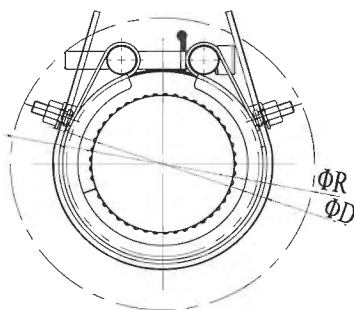
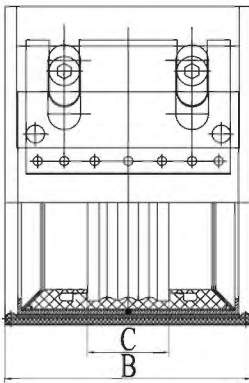
The GRIP-GF is based on the proven coupling technology, which has been developed for the shipbuilding industry, also is successfully used for tunneling, fire hose applications etc. In the event of a fire, GRIP-GF coupling protectively enclosing the coupling. During this process, the coupling retains its full operational capability without any damage.

Suitable for pipes O.D $\phi 26.9\text{-}\phi 273\text{mm}$

The GRIP-GF represents the ultimate in high security fire protected mechanical pipe couplings.



Outside view



Material	V1	V2	V3	V4	V5	V6
Components						
Casing	AISI 304	AISI 316L	AISI 316TI	AISI 316L	AISI 316TI	
Bolts	AISI 304	AISI 316L	AISI 316L	AISI 304	AISI 304	
Bars	AISI 304	AISI 316L	AISI 316L	AISI 304	AISI 304	
Anchoring ring	AISI 301	AISI 301	AISI 301	AISI 301	AISI 301	
Strip insert (optional)	AISI 301	AISI 301	AISI 301	AISI 301	AISI 301	



Note:

1: Strip insert can be customized in AISI 316L/316TI

2: Please consult the BJ-GRIP technical department or its Agents when what you need is beyond the range of normal specification


GRIP PRODUCTS

GRIP-GF

Pipe outside diameter		Clamping range	Working pressure		Product O.D.	Width	Distance between sealing slips	Setting gap between pipe ends		Torque rate	Bolt
O.D.		Min-Max			Φ D	B	C	without strip insert	with strip insert (Max)		
(mm)	(In.)	(mm)	(bar)	(bar)	(mm)	(mm)	(mm)	(mm)	Max (mm)	(Nm)	M
21.3	0.84	20-23	18	46	52	56	19	5-8	10	8	
25	0.98	24-26	18	46	56	71	26	5-8	10	8	M6×2
26.9	1.059	26-28	18	46	58	71	26	5-8	10	8	
30	1.181	29-31	18	46	61	71	26	5-8	10	8	M6×2
33.7	1.327	32-35	18	40	65	71	26	5-8	10	8	
38	1.496	37-39	18	35	73	71	26	5-8	10	15	
42.4	1.669	41-43	18	32	77	71	26	5-8	10	15	
44.5	1.752	44-46	18	32	80	71	26	5-8	10	15	
48.3	1.902	47-49	18	32	83	71	26	5-8	10	15	M8×2
54	2.126	53-55	18	32	90	86	37	5-10	15	10	
57	2.244	56-58	18	32	93	86	37	5-10	15	10	
60.3	2.374	59-61	18	32	96	86	37	5-10	15	10	
66.6	2.622	64-68	18	32	105	105	37	5-10	25	20	
70	2.756	68-71	18	32	108	105	41	5-10	25	20	
73	2.874	72-74	18	32	111	105	41	5-10	25	20	
76.1	2.996	75-77	18	32	114	105	41	5-10	25	20	
79.5	3.130	78-81	18	32	118	105	41	5-10	25	20	
84	3.307	83-85	18	32	123	105	41	5-10	25	20	
88.9	3.500	87-91	18	32	127	105	41	5-10	25	20	M8×2
100.6	3.961	99-102	16	32	139	105	41	5-10	25	25	
101.6	4.000	100-103	16	32	140	105	41	5-10	25	25	
104	4.094	103-105	16	32	142	105	41	5-10	25	25	
108	4.252	106-109	16	32	146	105	41	5-10	25	25	
114.3	4.500	113-116	16	32	152	105	41	5-10	25	25	
127	5.000	126-128	16	30	171	120	54	5-10	35	40	
129	5.079	128-130	16	25	173	120	54	5-15	35	40	
130.2	5.126	129-132	16	25	174.3	120	54	5-15	35	40	
133	5.236	131-135	16	25	177	120	54	5-15	35	40	
139.7	5.500	138-142	16	25	183.8	120	54	5-15	35	40	M10×2
141.3	5.563	140-143	16	25	185.4	120	54	5-15	35	40	
154	6.063	153-156	16	25	198	120	54	5-15	35	40	
159	6.260	158-161	16	25	203	120	54	5-15	35	40	
168.3	6.626	167-170	16	25	212	120	54	5-15	35	40	
193.7	7.626	192-196	16	22	242	152	76	15-20	40	60	
200	7.874	198-202	10	22	249	152	76	15-20	40	60	
204	8.031	202-206	10	22	252	152	76	15-20	40	60	
206	8.110	204-208	10	22	255	152	76	15-20	40	60	
219.1	8.626	216-222	10	22	268	152	76	15-20	40	60	
244.5	9.626	242-247	10	22	294	152	76	15-20	40	60	M12×2
250	9.843	247-253	10	20	299	152	76	15-20	40	60	
254	10.000	251-257	10	20	303	152	76	15-20	40	60	
256	10.079	253-259	10	20	305	152	76	15-20	40	60	
267	10.512	264-270	10	20	316	152	76	15-20	40	60	
273	10.748	270-276	10	20	322	152	76	15-20	40	60	

Note:

Above table shows most common sizes, couplings can be customized for special outside diameters. Please contact us for further details.

 Working pressure for marine applications. Minimum burst is 4 times working pressure. Figures are based on typical values for standard wall carbon steel pipe.

 Working pressure for industrial and land-based applications. Minimum burst is 1.5 times working pressure.

Figures are based on typical values for standard wall carbon steel pipe.